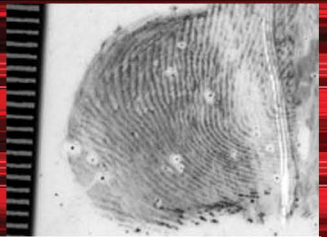




RON SMITH & ASSOCIATES, INC.



COMPLEX LATENT PRINT EXAMINATION

Course Description

This course is designed to assist the examiner in understanding the complexity of friction ridge detail. Students will learn valuable searching smart skills that can be applied for all areas of friction ridge examination. An overview of the detail of friction ridge skin of the fingers and palms and then will progress into the areas of tonal reversal, mirror prints, overlapping prints, distorted prints, etc. Even with the most challenging friction ridge detail, there are usually visual clues that can be used in the analysis and comparison process. Step by step instructions and practical exercises in the ACE-V Methodology will give the students more insight to assist them in properly analyzing these complex prints.

Not all friction ridge detail left behind at crime scenes are from the hand area. Did you ever consider that it could have come from friction ridge detail found on the foot? Did you know that our feet have friction ridge detail that has unique features? A presentation will be given to discuss the unique friction ridge detail found on our feet.

Part of the scientific process is documenting the analysis based on observed "objective" data. Students will be presented the SWGFAST Documenting the ACE-V Standard and then will be given a practical exercise containing various latent prints to document their analysis.

How do Frye, Daubert and Kumho affect you? What are some of the questions you can expect at a "Daubert Hearing?" What resources do you have available to assist you in responding to a Plaza style challenge to the science of fingerprints? What is a Plaza challenge? What resources do you have available for your personal development in the science? What resources do you have at your disposal in establishing guidelines for your latent print unit? All these questions and more will be answered during this intense week of presentations, comparison exercises, conducted both individually and as a group (bring those magnifiers), and a "hands on" application of much of the material presented.

What has happened since the National Academy of Science (NAS) in their released report? We will be discussing the impact this report has had and continues to have on examiners.

Instruction Includes

- Students will receive instructions on:
 - Searching Smart techniques
 - Palm Print location/orientation
 - Analyzing complex prints such as tonal reversed, image reversed, overlay, pressure distortion issues, etc.)
 - Footprint Ridge Detail
 - Daubert issues
 - SWGFAST ACE-V Methodology Standard
 - SWGFAST Documentation Standard



Class Instructor:
Debbie Benningfield
CLPE



Course Logistics

When:
November 4-8, 2024

Class Times:
08:00 AM - 05:00 PM

Where:
Torrance Police Department
3300 Civic Center Drive
Downstairs Assembly Room
Torrance, CA 90503

Tuition:
\$650.00

***This course approved for
I.A.I. Certification & Re-certification***

Local Contact

Carrie Harris
Senior Forensic Identification Specialist
Torrance Police Department
310-781-7100
charris@torranceca.gov

Daily Schedule

	DAY 1	DAY 2	DAY 3	DAY 4	DAY 5
Hour 1	Instructor & Student Intro	Fingerprint Analysis & Comparison Exercise continued	Review of Palm Print Comparison Exercise	Complex Print Comparison Exercise continued	SWGFAST/ OSACS Presentation
Hour 2	Scientific Basis of Friction Ridge Detail Presentation	Review of Fingerprint Exercise	Analyzing Complex Prints (distortion, tonal reversed, print overlay) Presentation		Review of Complex Comparison Exercise
Hour 3	ACE-V Methodology Presentation	Palm Print Orientation & Location Presentation	Complex Practical Exercise	Friction Ridge Detail of the Feet Presentation and Comparison Exercise	
Hour 4	Reaching Conclusions Presentation (OSAC)		LUNCH		LUNCH
Hour 5	Searching Smart (Fingerprints) Presentation	Palm Print Orientation & Location Comparison Exercise	Complex Print Comparison Exercise continued	Review of Footprint Comparison Exercise	Mayfield Case/Scientific Evidence Video
Hour 6	Crease Exercise			Case Documentation Requirements Presentation	Final Exam
Hour 7	Fingerprint Analysis & Comparison Exercise			Documentation Exercise	
Hour 8		Presentation of Certificates			

Target Audience

This course is primarily designed for the more experienced examiner by advancing to the comparison of more complex prints, e.g., distorted, multiple impression overlay, tonal reversed, etc. However, it still allows less experienced examiners gain valuable "time under the glass" by starting with the less difficult comparisons then proceed to the more complex prints at their own pace. Familiarity with basic fingerprint terms such as delta, core, pattern area, ridge events are important to understand prior to attending this course.

Must Bring to Class

Magnifier(s), ridge counters, pen, red thin sharpie pen and paper. It is highly recommended that at least a 5x power magnifier be brought to the class.

Dress is business casual

Should be Able to Perform

At the conclusion of this course students will know the value of searching smart and using visual clues to help analyze complex prints. They will learn how to document their findings using the SWGFAST Documenting the ACE-V Standard. They will also hear about the challenges in the legal system and their impact on their work as examiners. Finally, the students will learn about the IAI Latent Print Certification Program and the importance of achieving certification.

Helpful Lodging Information

Although we cannot endorse any particular hotel property, we have confirmed that the following lodging is within a reasonable commuting distance to the training site.

Doubletree by Hilton Torrance - South Bay

21333 Hawthorne Boulevard

Torrance, CA 90503

310-540-0500

Please Click Here For Reservations

Comments on Training Site:

Park in the lot south of the Police Department. Check in with the front desk Services Officer for access and directions.